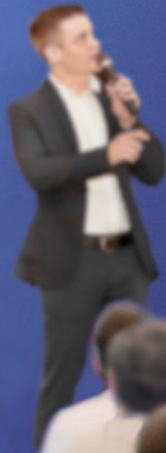




PT. MANDIRI ARTHA SOLUSI
EMPOWERING BUSINESS FORWARD

AVer



PTC500S

Professional Auto Tracking Camera



TAIWAN
EXCELLENCE 2019

Professional PTZ Camera Provider

The Future of Tracking

Up to 30X Optical Zoom

A PTZ camera with a 30X optical zoom and a 350° pan and 120° tilt radius make the PTC500S ideal for large classrooms or auditoriums. Full HD 1080p 60fps video and a powerful remote autofocus function display important details distinctly, capturing the full joy of the classroom with the most realistic and dynamic image quality.



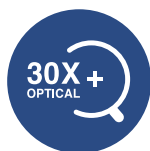
No Extra Devices Needed

The PTC500S uses exclusive algorithms to automatically track a presenter's face and movements. That means teachers can freely walk around the class to guide students without any accessories. Forget about the restrictions, security, and expense of a wearable device, and focus on building zero-distance interactive teaching.



Dual Lens Design

A dual lens design integrates a PTZ camera with a panoramic 120° FOV secondary camera to track the speaker and simultaneously capture the classroom. Also, you can enable and adjust PIP mode while capturing. Clearly present every detail and never miss a teachable moment.



30X Optical Zoom



120° FOV



3 Tracking Modes



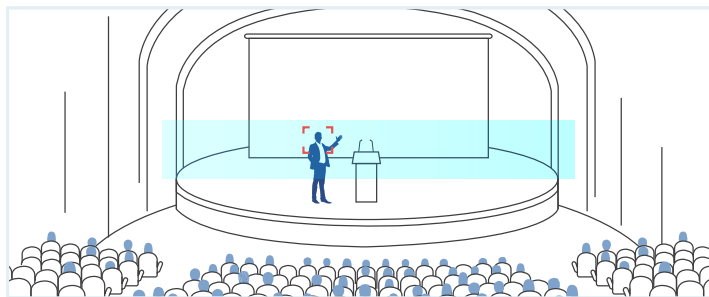
Multi-Presenter Detection



HDMI/3G-SDI /IP Output

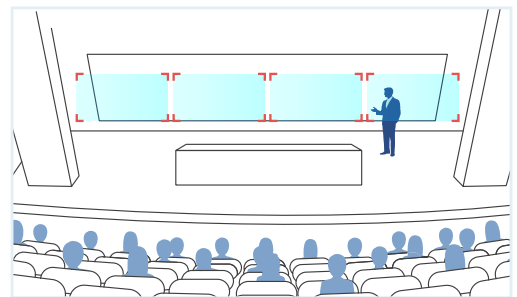
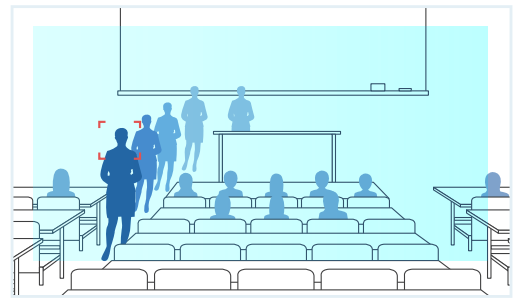
Three AI Tracking Modes

Enjoy three different tracking modes with the PTC500S. **Wide Area Tracking** follows presenters on and off the stage, even when they become obscured by other people or objects. **Stage Tracking** fluidly tracks targets across a stage, with Effective Zone settings allowing for up to eight blocking zones so you can capture professional-looking video. **Segment Tracking** enables you to set up up to four Content Zones and perfectly capture the displays rather than the presenter.



Stage Tracking

Wide Area Tracking

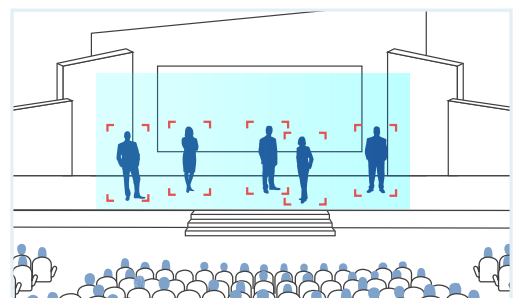


Segment Tracking

Multi-Presenter Detection

Industry-leading Multi-Presenter Detection accurately tracks when there are two or more people in the effective area. This feature allows teachers to conduct group discussions, interactive games, and more. Use one camera to capture every detail of every learning situation.

** Multi-Presenter Detection only works in Wide Area Tracking and Stage Tracking modes.*



Product Specifications

PTZ Camera

Image Sensor: 1/2.8" 60fps low lux CMOS sensor	Minimum Working Distance: 1.2 m at tele end (30X) ; 0.1 m at wide end (1X)
Effective Picture Elements: 2 megapixels	White Balance: auto / manual (2500 - 10000)
Output Resolution: auto, 1080p/60, 1080p/50, 1080i/60, 1080i/50, 1080p/30, 720p/60	Gain: auto / manual
Optical Zoom: 30X	Electronic Shutter: 1/5 s to 1/32,000 s
Digital Zoom: 12X	Backlight Compensation (BLC): off / on
Lens Focal Length: f = 4.3 mm (wide) - 129 mm (tele)	Exposure: auto / shutter priority / iris priority / manual
Iris: F = 1.6 (wide) - 4.7 (tele)	Noise Reduction: off / low / medium / high
View of Angle: DFOV = 76° (wide) - 3° (tele)	Frequency: auto / 50 Hz / 60 Hz
Minimum Illumination: IRE50 0.47 lux (60fps) ; 0.23 lux (30fps)	S/N Ratio: >50 dB
Preset Number: 10 (IR Remote), 256 (RS232)	Horizontal Resolution: center (800 TV lines) ; corner (600 TV lines)

Pan Tilt Parameters

Pan Rotation: -175° (left) +175° (right)	Tilt Control Speed: 2° - 50°/sec
Tilt Rotation: -30° (down) + 90° (up)	Preset Speed: pan (160°/sec), tilt (160°/sec)
Pan Control Speed: 2° - 50°/sec	

Panoramic Camera (Full View)

Image Sensor: 1/2.8" 60fps low lux CMOS sensor	White Balance: auto
Effective Picture Elements: 2 megapixels	Exposure: auto
Output Resolution: auto, 1080p/60, 1080p/30, 720p/60	FOV: DFOV = 120°, HFOV = 110°, VFOV = 74.5°
Lens Focal Length: 2.12 mm	

Interface / Streaming / Protocol

Video Output: 3G-SDI x 2, HDMI x 1, IP (RJ45)	Network Video Compress Format: H.264
Video Output Capability: up to 1080p/60fps	Network Protocol: RTSP, RTMP, ONVIF
Remote Control: RS232 (via optional DB9 to DIN6 adapter), IP (RJ45)	IP Video Streaming: dual video streaming (PTZ and panoramic view)
Baud Rate: 115200 / 9600 / 4800 / 2400 bps	Control Protocol: VISCA / Pelco-D / Pelco-P
Network Interface: 10 / 100 / 1000 Base-T, supports Wake-on-LAN	Power: power adapter DC 12V

System

Remote IR: IR sensor	Operating Humidity: 20% - 80%
Audio: PCM, AAC-LC, G.711	Storage Temperature: -20°C - +60°C
LED: power (blue = on, red = off)	Storage Humidity: 20% - 95%
Security: Kensington slot	Dimensions: L = 201 mm, W = 210 mm, H = 176 mm
Infrared Remote: receiver on front of camera	Weight: 1.75 kg
Power Adapter: AC 110V - AC 220V to DC 12V/5A	Application: indoor
Consumption: 24 W (max.)	Accessories: remote control, 12V/5A power adapter, DB9 to DIN6 adapter, quick guide
Operating Temperature: 0°C - +40°C	

Warranty

Camera: 3 years	Accessories: 1 year
-----------------	---------------------

Hardware Specifications

Front Panel



Back Panel



Contact Us.

Head Office.
Ruko Sampoerna Square No.15, Jl. Raya Hankam, Jatiraden, Jatisampurna, Bekasi 17433
Telp. (021) 22813394 – info@mandiarithasolusi.co.id – www.mandiarithasolusi.co.id

Branch Office.
Ruko Derwati Mas Estate, No. 31, Jl. Derwati Raya, Kel. Derwati, Kec. Rancasari – Bandung 40292
Telp. (022) 87311487

Follow Us.

[f](#)
[in](#)
[v](#)
[Mandiri Artha Solusi](#)
[@mandiaritha](#)
[0812 1111 2948](#)