

# DH-IPC-HDW8341X-3D

3MP Dual-Lens People Counting Network Camera



- Two 1/2.8" 3Megapixel progressive scan CMOS
- H.265&H.264 triple-stream encoding
- 25fps@3MP(2048×1536)
- DWDR, Day/Night(ICR), 3DNR, AWB, AGC, BLC
- Multiple network monitoring: Web viewer, CMS(DSS/PSS) & DMSS
- 2.8mm fixed lens (3.6mm optional)
- Max. IR LEDs Length 10m
- Micro SD memory, IP67, PoE
- People Counting: Support line crossing people counting, region people counting



excellent video quality.

## System Overview

Ultra series product adopts high performance DSP and Sony advanced image sensor technology, which can provide excellent image effects for users. The series utilizes Dahua advanced software algorithm, which is able to support people counting, bringing extra business analysis value for customers. The dual-lens design can get depth information which brings high accuracy of people counting. Besides, IP67 and IK10 enables the product to be applied in a more harsh environment.

## Functions

### Intelligent Video System (IVS)

Dahua camera has a built-in video analysis based on intelligent algorithms and can achieve the following: Tripwire, Intrusion, Abandoned/ Missing can timely, quickly and accurately respond to monitoring events in specific area. It enhances monitoring efficiency. At the same time, the camera can support face detection, it can quickly capture a face and upload the image to the server. In addition the camera also supports intelligent tamper detection, through dramatic changes in the scene it will send out warning information to ensure effective monitoring.

### Business intelligent analysis (People counting, Heatmap)

Dahua Camera also supports more advanced intelligent features such as people counting and heat map besides basic IVS functions. These two functions can be applied to business intelligence and bring extra values to customers. It is available to acquire daily, weekly, monthly and yearly people flow via people counting and output data report. Heat map can be based on a moving object in time of space movement for analysis, find the most active area and output the report, which is to provide valuable data support for commercial applications.

### Smart Scene Adaptive (SSA)

Smart Scene Adaptive (SSA) is a Dahua self-developed intelligent image technology, the camera automatically evaluates the change in scene, in particular strong lights. In a strong backlight environment, it will automatically regulate exposure parameters to get better image quality. This can effectively address the impact of traffic lights, providing

### Smart H.265+

Deliver high quality video without straining the network, Smart H.265+ is the optimized implementation of H.265. The Smart H.265+ encoding technology includes a scene adaptive encoding strategy, dynamic GOP, dynamic ROI, flexible multi-frame reference structure and intelligent noise reduction, providing saving of up to 70% of bandwidth and storage when compared with standard H.265.

### Protection (IP67, wide voltage)

Supporting  $\pm 25\%$  input voltage tolerance, this camera suits even the most unstable conditions for outdoor applications. Its 6KV lightning rating provides effective protection for both the camera and its structure against lightning. IP67 is supported by the camera, which makes it suitable for both indoor and outdoor environments.

### Environmental

With a temperature range of -30 °C to +60 °C (-22 °F to +140 °F), the camera is designed for extreme temperature environments. Subjected and certified to rigorous dust and water immersion tests, the IP67 rating makes it suitable for demanding outdoor applications.

**Technical Specification**

Camera

|                      |   |
|----------------------|---|
| Image Sensor         | Two 1/2.8" 3Megapixel progressive scan CMOS   |
| Effective Pixels     | 2048(H)x1536(V)   |
| RAM/ROM              | 512MB/4096MB  |
| Scanning System      | Progressive   |
| Minimum Illumination | 2.8mm: 0.04Lux/F1.8 (Color,1/3s,30IRE)<br>0.14Lux/F1.8 (Color,1/30s,30IRE)<br>0Lux/F1.8 (IR on)<br>3.6mm: 0.008Lux/F2.1 (Color,1/3s,30IRE)<br>0.07Lux/F2.1 (Color,1/30s,30IRE)<br>0Lux/F2.1 (IR on) |
| S/N Ratio            | More than 50dB  |
| IR Distance          | Distance up to 10m(33ft)  |
| IR On/Off Control    | Auto/ Manual  |
| IR LEDs              | 1   |

Lens

|                      |                               |            |           |           |          |
|----------------------|-------------------------------|------------|-----------|-----------|----------|
| Lens Type            | Fixed                         |            |           |           |          |
| Mount Type           | Board-in                      |            |           |           |          |
| Focal Length         | 2.8mm (3.6mm)                 |            |           |           |          |
| Max. Aperture        | F1.8 (F2.1)                   |            |           |           |          |
| Angle of View        | H: 137° (106°), V:114° (80°), |            |           |           |          |
| Optical Zoom         | N/A                           |            |           |           |          |
| Focus Control        | Fixed                         |            |           |           |          |
| Close Focus Distance | 0.6m (0.9m)                   |            |           |           |          |
| DORI Distance        | Lens                          | Detect     | Observe   | Recognize | Identify |
|                      | 2.8 mm                        | 45m(147ft) | 18m(59ft) | 9m(29ft)  | 4m(13ft) |
|                      | 3.6 mm                        | 57m(187ft) | 23m(75ft) | 11m(36ft) | 6m(19ft) |

Pan/Tilt/Rotation

|                         |                |
|-------------------------|----------------|
| Pan/Tilt/Rotation Range | Tilt:-10°~70°; |
|-------------------------|----------------|

Intelligence

|                                |  |
|--------------------------------|--|
| Event Trigger                  | Motion detection, Video tampering, Scene changing, Network disconnection, Ip address conflict, Illegal access, Storage anomaly |
| IVS                            | Tripwire, Intrusion, Object Abandoned/Missing  |
| Advanced Intelligent Functions | People Counting: Support line crossing people counting, region people counting; Heatmap  |

Video

|                      |  |
|----------------------|--|
| Compression          | H.265/H.264H/MJPEG(Sub Stream)   |
| Smart Codec          | Support H.265+/H.264+  |
| Streaming Capability | 3 Streams  |
| Resolution           | 3MP(2048x1536)/ 1080P(1920x1080)/ 1.3M(1280x960)/ 720P(1280x720)/ D1(704x576/704x480) / VGA(640x480)/ CIF(352x288/342x240) |
| Frame Rate           | Main Stream: 3MP (1~25fps)   |
|                      | Sub Stream 1: D1 (1~25/30fps)  |
|                      | Sub Stream 2: 6MP (1~7fps, For Debugging Only)   |

|                                      |  |
|--------------------------------------|--|
| Bit Rate Control                     | CBR/VBR                                      |
| Bit Rate                             | H.264: 192~ 10240Kbps<br>H.265: 80~ 6144Kbps |
| Day/Night                            | Auto(ICR) / Color / B/W                      |
| BLC Mode                             | BLC / HLC / DWDR / SSA                       |
| White Balance                        | Auto/Natural/Street Lamp/Outdoor/Manual      |
| Gain Control                         | Auto/Manual                                  |
| Noise Reduction                      | 3D DNR                                       |
| Motion Detection                     | Off / On (4 Zone, Rectangle)                 |
| Region of Interest                   | Off / On (4 Zone)                            |
| Electronic Image Stabilization (EIS) | N/A  |
| Smart IR                             | Support                                      |
| Defog                                | Support                                      |
| Digital Zoom                         | 16x  |
| Flip                                 | N/A  |
| Mirror                               | N/A  |
| Privacy Masking                      | Off / On (4 Area, Rectangle)                 |

Audio

|             |                             |
|-------------|-----------------------------|
| Compression | G.711a/ G.711Mu/ AAC/ G.726 |
|-------------|-----------------------------|

Network

|                     |   |
|---------------------|---|
| Ethernet            | RJ-45 (100/1000Base-T)  |
| Protocol            | HTTP;HTTPS;TCP;ARP;RTSP;RTP;RTCP;UDP;SMTP; FTP;DHCP;DNS;DDNS;PPPoE;IPV4/V6;QoS;UPnP; NTP;Bonjour;IEEE 802.1X;Multicast;ICMP;IGMP;TLS; |
| Interoperability    | ONVIF Profile S&G, API  |
| Streaming Method    | Unicast / Multicast   |
| Max. User Access    | 10 Users/20 Users   |
| Edge Storage        | NAS<br>Local PC for instant recording<br>Mirco SD card 128GB  |
| Web Viewer          | IE, Chrome, Firefox, Safari   |
| Management Software | Smart PSS, DSS, DMSS  |
| Smart Phone         | IOS, Android  |

Certifications

|                |  |
|----------------|--|
| Certifications | CE (EN 60950:2000)<br>UL:UL60950-1<br>FCC: FCC Part 15 Subpart B |
|----------------|--|

Interface

|                 |  |
|-----------------|--|
| Video Interface | 1 port (For Adjustment Only)           |
| Audio Interface | 2/1 channel In/Out (RCA), Built-in Mic |
| RS485           | N/A                                    |
| Alarm           | 2/2 channel In/Out                     |

Electrical

|                   |                                    |
|-------------------|------------------------------------|
| Power Supply      | DC12V, PoE (IEEE 802.3af)(Class 0) |
| Power Consumption | < 12W                              |

Environmental

|                      |   |
|----------------------|---|
| Operating Conditions | -30° C ~ +60° C (-22° F ~ +140° F) / Less than 95% RH |
| Storage Conditions   | -30° C ~ +60° C (-22° F ~ +140° F) / Less than 95% RH |
| Ingress Protection   | IP67  |
| Vandal Resistance    | N/A   |

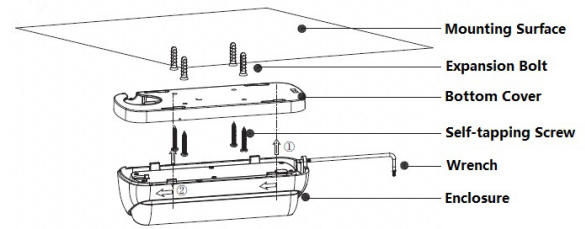
Construction

|              |                                     |
|--------------|-------------------------------------|
| Casing       | Metal                               |
| Dimensions   | 204mmx78mmx62mm (8.03"x3.07"x2.44") |
| Net Weight   | 0.8kg (1.76lb)                      |
| Gross Weight | 1.09kg (2.40lb)                     |

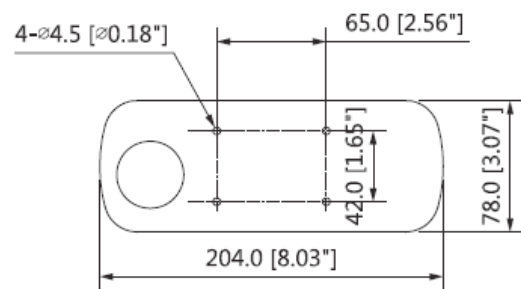
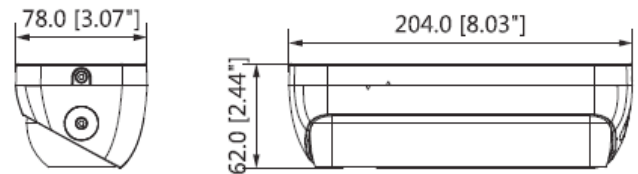
Ordering Information

| Type       | Part Number              | Description                                       |
|------------|--------------------------|---|
| 3MP Camera | DH-IPC-HDW8341XP-3D-0280 | 3MP Dual-Lens People Counting Network Camera,PAL  |
|            | DH-IPC-HDW8341XN-3D-0280 | 3MP Dual-Lens People Counting Network Camera,NTSC |
|            | IPC-HDW8341XP-3D-0280    | 3MP Dual-Lens People Counting Network Camera,PAL  |
|            | IPC-HDW8341XN-3D-0280    | 3MP Dual-Lens People Counting Network Camera,NTSC |
|            | DH-IPC-HDW8341XP-3D-0360 | 3MP Dual-Lens People Counting Network Camera,PAL  |
|            | DH-IPC-HDW8341XN-3D-0360 | 3MP Dual-Lens People Counting Network Camera,NTSC |
|            | IPC-HDW8341XP-3D-0360    | 3MP Dual-Lens People Counting Network Camera,PAL  |
|            | IPC-HDW8341XN-3D-0360    | 3MP Dual-Lens People Counting Network Camera,NTSC |

Installation



Dimensions (mm/inch)



Contact Us.

Head Office. Ruko Sampoerna Square No. 15  
 Jl. Raya Hankam, Jatisampurna - Bekasi 17433  
 Telp. (021) 22813394

www.mandiarthasolusi.co.id  
 info@mandiarthasolusi.co.id